

PLASTIC PIPE WELDING TECHNOLOGY

**ROWELD**



EN





## Innovation, Quality and Services: Welcome to the World of ROTHENBERGER

Pipelines conveying energy and water are the world's lifelines. Just like the veins in the human body, they guarantee that warmth, fuels and lifebringing fluids reach their recipients – an important contribution to the overall quality of human life.

For more than 60 years now, ROTHENBERGER has been supporting all those whose daily work helps not only to ensure that these lifelines reach more and more people, but also to maintain them in an excellent condition: by supplying innovative and reliable highest quality pipetools and machinery that can be found in the hands of excellent skilled craftsmen and on construction sites all around the globe.





PLASTIC PIPE WELDING TECHNOLOGY

<b>01</b>	<b>HYDRAULIC BUTT-WELDING</b> PREMIUM CNC PREMIUM PROFESSIONAL STANDARD	7
<b>02</b>	<b>MANUAL BUTT-WELDING</b>	21
<b>03</b>	<b>ELECTROFUSION</b> WITHOUT REPORT WITH REPORT	25
<b>04</b>	<b>SOCKETWELDING</b>	28
<b>05</b>	<b>CUTTERS &amp; HANDTOOLS</b>	30

## The new generation of ROWELD hydraulic controls for butt welding

The ROWELD hydraulic butt welding machine is available in a **Standard , Professional & Premium** version. The Premium hydraulic unit is divided into **Premium & Premium CNC**.

### Everything at a glance...



Fig. similar

	Type Standard	Type Professional	Type Premium CNC
<b>Operation</b>	manual	manual	automatic
<b>Available sizes</b>	63–1200 mm	40–1200 mm	90–630 mm
<b>Pressure display</b>	analogue	analogue	digital
<b>Temperature control</b>	standard	optimized*	optimized*
<b>Clamping system</b>	multilayer (single optional)	single	single
<b>Service</b>	standard**	extended	extended
<b>Datalogging</b>	optional		10.000 protocols
<b>Accordance to normatives</b>		DVS/ISO	DVS/ISO
<b>Weight optimized machine</b>		●	●
<b>Optimized power consumption for generator use</b>		●	●
<b>Automatic parameter calculation</b>			●
<b>CNC-control</b>			●

- Timer and temperature controller integrated in hydraulic.
- Angled frame.

- Lightweight frame and longlife components.
- Triple coating of heating elements for a longer lifetime and better heat distribution.

- Lightweight frame and longlife components.
- Triple coating of heating elements for a longer lifetime and better heat distribution.
- Simple operation via touch control panel.
- Full documentation of the welding process.



\* Temperature control +/- 5 °C  
\*\* Only spare parts

## ROWELD type Premium CNC

Hydraulic butt-welding machine Ø 90–630 mm. The Premium CNC System enables a nearly fully automated operation. All parameters are documented automatically.

The ROWELD Hydraulic Premium CNC with integrated CNC control and touch screen panel for the quick and reliable saving of the welding parameters in accordance with DVS and other applicable international guidelines and standards. Data transfer via USB interface.

### Working range:

Description	Ø mm
P 250 B SA	90–250 mm
P 250 B VA	90–250 mm
P 355 B SA	90–355 mm
P 355 B VA	90–355 mm
P 500 B SA	200–500 mm
P 630 B SA	315–630 mm

### Technical Data:

- Automatic logging:** 10.000 logs
- Data output:** USB interface
- Languages:** DE, EN, FR, ES, NL, PT, DK, SE, NO, FI, PL, TR, HU, SL, SK, RU, BG, further languages available upon request
- Welding monitoring:** Optically with colour indication for welding pressure, welding temperature, welding times, as well as acoustical and optical for user actions
- Logging:** in accordance to DVS
- Welding standards:** DVS, further standards available upon request, manual entry of welding parameters is possible
- With CNC Funktion:** During the welding process, all movements are performed by the machine, including dragging resistance and bead development measurement. Automatic extending heating element enables a fully-automatic welding process (optional, not available for all machines)

Simple operation via touch control panel.

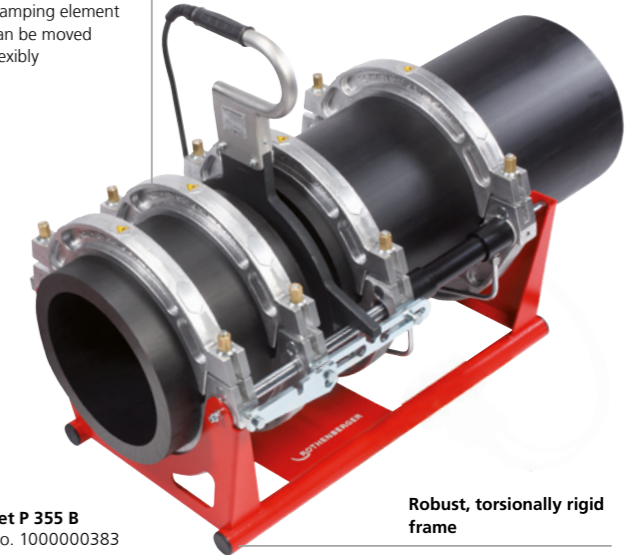


Trimmer with safety switch. Secures against unintended activation of the trimmer.



### Flexible

The 3<sup>rd</sup> basic clamping element can be moved flexibly



Set P 355 B  
No. 1000000383

### Robust, torsionally rigid frame

Allows reliable weldings in virtually any environment

### Simple operation

Ideally matched components allow precise start-up of the pressure



### Safe

Perfect parking for trimmer and heating plate



Safe operation – automatic calculation, control and inspection of the welding parameters.



The pull-off fixture allows rapid lifting out of the heating element.



**ROWELD plastic pipe welding machines type Premium CNC\***

**Machines Ø 90–630 mm**

Description	Ø Basic unit	Working range	Voltage	Frequency	Power	kg	No.	Basic unit		Hydraulic		Trimmer		Heating plate				
								kg	No.	kg	Power	No.	kg	Power	No.	kg	Power	No.
ROWELD P 250 B SA Premium CNC basic set	250 mm	90–250 mm	230 V	50 Hz	3.2 kW	125.9	<b>100000560</b>	62.7	<b>120000626</b>	33.5	880 W	<b>53769</b>	15.0	750 W	<b>120000802</b>	5.5	1500 W	<b>53725</b>
	250 mm	90–250 mm	230 V	60 Hz	3.2 kW	125.9	<b>100000884</b>	62.7	<b>120000626</b>	33.5	880 W	<b>120000952</b>	15.0	750 W	<b>120000802</b>	5.5	1500 W	<b>53725</b>
ROWELD P 250 B VA Premium CNC basic set	250 mm	90–250 mm	230 V	50 Hz	3.2 kW	132.9	<b>100000561</b>	62.7	<b>120000629</b>	33.5	880 W	<b>53769</b>	15.0	750 W	<b>120000802</b>	5.5	1500 W	<b>53695</b>
	250 mm	90–250 mm	230 V	60 Hz	3.2 kW	132.9	<b>100000885</b>	62.7	<b>120000629</b>	33.5	880 W	<b>120000952</b>	15.0	750 W	<b>120000802</b>	5.5	1500 W	<b>53695</b>
ROWELD P 355 B SA Premium CNC basic set	355 mm	90–355 mm	230 V	50 Hz	4.2 kW	131.8	<b>100000563</b>	56.4	<b>120000650</b>	33.5	880 W	<b>53769</b>	22.2	750 W	<b>1200001045</b>	9.1	2500 W	<b>120000324</b>
	355 mm	90–355 mm	230 V	60 Hz	4.2 kW	131.8	<b>100000886</b>	56.4	<b>120000650</b>	33.5	880 W	<b>120000952</b>	22.2	750 W	<b>1200001045</b>	9.1	2500 W	<b>120000324</b>
ROWELD P 355 B VA Premium CNC basic set	355 mm	90–355 mm	230 V	50 Hz	4,2 kW	148,4	<b>1000001081</b>	56,4	<b>1200001052</b>	33,5	880 W	<b>53769</b>	22,2	750 W	<b>1200001045</b>	9,1	2500 W	<b>1200001053</b>
	355 mm	90–355 mm	230 V	60 Hz	4,2 kW	148,4	<b>1000001082</b>	56,4	<b>1200001052</b>	33,5	880 W	<b>53769</b>	22,2	750 W	<b>1200001045</b>	9,1	2500 W	<b>1200001053</b>
ROWELD P 500 B SA Premium CNC basic set	500 mm	200–500 mm	400 V	50/60 Hz	7.2 kW	389.0	<b>100000565</b>	195.0	<b>120000651</b>	38.0	1950 W	<b>54796</b>	68.0	1210 W	<b>53405</b>	32.0	4000 W	<b>53408</b>
ROWELD P 630 B SA Premium CNC basic set	630 mm	315–630 mm	400 V	50/60 Hz	11.2 kW	526.0	<b>100000567</b>	245.0	<b>120000652</b>	38.0	1950 W	<b>54796</b>	123.0	1770 W	<b>53310</b>	49.0	8000 W	<b>53409</b>

\* ROWELD basic sets consist of: The basic unit with high-pressure hoses and 4 base clamping units, an hydraulic device, heating element, milling device, adjusting box, set of tools and transport box. The desired reduction clamping elements can be ordered separately in the desired size or as a set for the respective machine size.

**ROWELD reducer clamp inserts**

Narrow basic clamp elements on request

Description	Ø	kg	No.
Set 250	90–250 mm	57.6	<b>55241</b>
Set 355	160–355 mm	105.6	<b>100000385</b>
Set 315	90–140 mm	25.0	<b>100000550</b>
(Supplement with 1000000385)			
Set 500	200–500 mm	276.0	<b>55234</b>
Set 630	315–630 mm	239.6	<b>55232</b>

**ROWELD lift-out devices**

Description	Voltage	kg	No.
For P 500 B	400 V	123.0	<b>53410</b>
For P 630 B	400 V	163.0	<b>53323</b>

**ROWELD pipe roller, galvanized**

Description	Ø	Payload	kg	No.
Size 1	up to 315 mm	up to 300 kg	4.0	<b>53055</b>
Size 2	up to 500 mm	up to 500 kg	11.5	<b>53056</b>
Size 3	up to 710 mm	up to 1000 kg	29.0	<b>53057</b>
Size 4	up to 1200 mm	up to 1000 kg	35.0	<b>53058</b>

**Size 1–3: roller is at a fixed elevation**  
**Size 4: roller height can be adjusted hydraulically**

**Spare blade for ROWELD trimmer**

Description	Ø	kg	No.
For trimmer P 250 B	250 mm	0.10	<b>55163</b>
For trimmer P 355 B	355 mm	0.30	<b>55446</b>
For trimmer P 500 B	500 mm	0.40	<b>55233</b>
For trimmer P 630 B	630 mm	0.50	<b>53322</b>

**VPE 1=2 pieces**

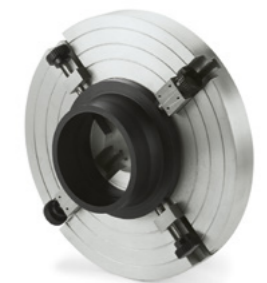
**Timer LCD**

Description	kg	No.
Timer	0.09	<b>L20315</b>



**ROWELD flange adapter**

For centred welding of flanges



Description	Ø	kg	No.
For P 250 B	250 mm	8.6	<b>55166</b>
For P 355 B	315 mm	9.9	<b>55447</b>
For P 500 B	500 mm	23.3	<b>55236</b>
For P 630 B	630 mm	31.4	<b>53321</b>



**ROWELD reducer clamp inserts**

90–450 mm:

The set consists respectively of 6 wide aluminium half shells (pipe / pipe) and 2 angled aluminium half shells (pipe / fitting)

500–630 mm:

The set consists respectively of 8 wide aluminium half shells (pipe / pipe)



<b>P 250 B</b>			<b>P 355 B</b>			* adapter is required		
Ø mm	kg	No.	Ø mm	kg	No.	Ø mm	kg	No.
90	7.6	53039	90	7.6	53039*			
110	7.9	53040	110	7.9	53040*			
125	7.9	53041	125	7.9	53041*			
140	7.8	53042	140	7.8	53042*			
160	7.7	53043	160	7.7	53043*			
180	7.6	53044	180	7.6	53044*			
200	6.7	53045	200	6.7	53045*			
225	4.4	53046	225	4.4	53046*			
			250	13.9	100000904			
			280	11.4	100000388			
			315	8.4	100000905			
			Adapter 355/250	14.3	100000387			

<b>P 500 B</b>			<b>P 630 B</b>			* adapter is required		
Ø mm	kg	No.	Ø mm	kg	No.	Ø mm	kg	No.
200	40.0	100000896	315	36.1	100000900*			
225	39.1	100000897	355	31.7	100000901*			
250	38.6	100000898	400	25.2	100000902*			
280	97.7	100000899	450	26.6	100000903*			
315	36.1	100000900	500	38.8	53316			
355	31.7	100000901	560	42.4	53315			
400	25.2	100000902	Adapter 630/500	38.8	53316			
450	26.6	100000903						

**ROWELD type Premium**

Hydraulic butt welding machine Ø 90–1200 mm.  
The Premium Hydraulic System guides the user step-by-step through the welding process.  
All parameters are documented automatically.

The ROWELD Hydraulic Premium with an integrated logging module for the quick and reliable saving of the welding parameters in accordance with DVS and other applicable international guidelines and standards. Data transfer via USB interface.

**Working range:**

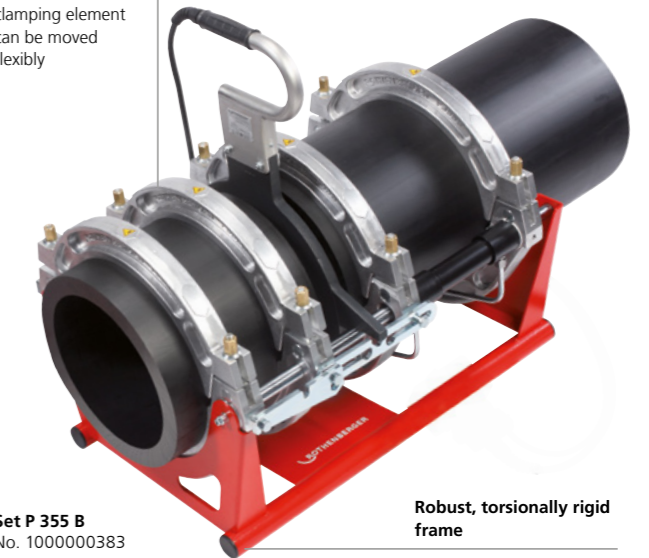
Description	Ø mm
P 250 B	90–250 mm
P 355 B	90–355 mm
P 500 B	200–500 mm
P 630 B	315–630 mm

**Technical Data:**

<b>Automatic logging:</b>	10.000 logs
<b>Data output:</b>	USB interface
<b>Languages:</b>	DE, EN, FR, ES, NL, PT, DK, SE, NO, FI, PL, TR, HU, SL, SK, RU, BG, further languages available upon request
<b>Welding monitoring:</b>	Optically with colour indication for welding pressure, welding temperature, welding times, as well as acoustical and optical for user actions
<b>Logging:</b>	in accordance to DVS
<b>Welding standards:</b>	DVS, further standards available upon request, manual entry of welding parameters is possible

**Flexible**

The 3<sup>rd</sup> basic clamping element can be moved flexibly



Set P 355 B  
No. 100000383

**Robust, torsionally rigid frame**

Allows reliable weldings in virtually any environment

**Simple operation**

Ideally matched components allow precise start-up of the pressure



Simple operation via touch control panel.

**Safe**

Perfect parking for trimmer and heating plate



Trimmer with safety switch. Secures against unintended activation of the trimmer.



Safe operation – automatic calculation, control and inspection of the welding parameters.



The pull-off fixture allows rapid lifting out of the heating element.



**ROWELD plastic pipe welding machines type Premium\***

**Machines Ø 90–630 mm**

Description	Ø Basic unit	Working range	Voltage	Frequency	Power	kg	No.	Basic unit		Hydraulic		Trimmer		Heating plate				
								kg	No.	kg	Power	No.	kg	Power	No.	kg	Power	No.
ROWELD P 250 B Premium basic set	250 mm	90–250 mm	230 V	50 Hz	3.2 kW	125.9	<b>100000559</b>	62.7	<b>1200001029</b>	33.5	880 W	<b>55073</b>	15.0	750 W	<b>1200000802</b>	5.5	1500 W	<b>53725</b>
	250 mm	90–250 mm	230 V	60 Hz	3.2 kW	125.9	<b>1000000873</b>	62.7	<b>1200001029</b>	33.5	880 W	<b>1200000951</b>	15.0	750 W	<b>1200000802</b>	5.5	1500 W	<b>53725</b>
ROWELD P 355 B Premium basic set	355 mm	90–355 mm	230 V	50 Hz	4.2 kW	131.8	<b>1000000562</b>	56.4	<b>1200000322</b>	33.5	880 W	<b>55073</b>	22.2	750 W	<b>1200001045</b>	9.1	2500 W	<b>1200000324</b>
	355 mm	90–355 mm	230 V	60 Hz	4.2 kW	131.8	<b>1000000874</b>	56.4	<b>1200000322</b>	33.5	880 W	<b>1200000951</b>	22.2	750 W	<b>1200001045</b>	9.1	2500 W	<b>1200000324</b>
ROWELD P 500 B Premium basic set	500 mm	200–500 mm	400 V	50/60 Hz	7.2 kW	389.0	<b>1000000564</b>	195.0	<b>53401</b>	38.0	1950 W	<b>53294</b>	68.0	1210 W	<b>53405</b>	32.0	4000 W	<b>53408</b>
ROWELD P 630 B Premium basic set	630 mm	315–630 mm	400 V	50/60 Hz	11.2 kW	526.0	<b>1000000566</b>	245.0	<b>53305</b>	38.0	1950 W	<b>53294</b>	123.0	1770 W	<b>53310</b>	49.0	8000 W	<b>53409</b>

\* ROWELD basic sets consist of: The basic unit with high-pressure hoses and 4 base clamping units, an hydraulic device, heating element, milling device, adjusting box, set of tools and transport box. The desired reduction clamping elements can be ordered separately in the desired size or as a set for the respective machine size.

**ROWELD reducer clamp inserts**

Narrow basic clamp elements on request

Description	Ø	kg	No.
Set 250	90–250 mm	57.6	<b>55241</b>
Set 355	160–355 mm	105.6	<b>1000000385</b>
Set 315	90–140 mm	25.0	<b>1000000550</b>
(Supplement with 1000000385)			
Set 500	200–500 mm	276.0	<b>55234</b>
Set 630	315–630 mm	239.6	<b>55232</b>

**ROWELD lift-out devices**

Description	Voltage	kg	No.
For P 500 B	400 V	123.0	<b>53410</b>
For P 630 B	400 V	163.0	<b>53323</b>

**ROWELD pipe roller, galvanized**

Description	Ø	Payload	kg	No.
Size 1	up to 315 mm	up to 300 kg	4.0	<b>53055</b>
Size 2	up to 500 mm	up to 500 kg	11.5	<b>53056</b>
Size 3	up to 710 mm	up to 1000 kg	29.0	<b>53057</b>
Size 4	up to 1200 mm	up to 1000 kg	35.0	<b>53058</b>

**Size 1–3: roller is at a fixed elevation**  
**Size 4: roller height can be adjusted hydraulically**

**Spare blade for ROWELD trimmer**

Description	Ø	kg	No.
For trimmer P 250 B	250 mm	0.10	<b>55163</b>
For trimmer P 355 B	355 mm	0.30	<b>55446</b>
For trimmer P 500 B	500 mm	0.40	<b>55233</b>
For trimmer P 630 B	630 mm	0.50	<b>53322</b>

**VPE 1=2 pieces**

**Timer LCD**

Description	kg	No.
Timer	0.09	<b>L20315</b>



**ROWELD flange adapter**

For centred welding of flanges



Description	Ø	kg	No.
For P 250 B	250 mm	8.6	<b>55166</b>
For P 355 B	315 mm	9.9	<b>55447</b>
For P 500 B	500 mm	23.3	<b>55236</b>
For P 630 B	630 mm	31.4	<b>53321</b>

**ROWELD reducer clamp inserts**

90–450 mm:

The set consists respectively of 6 wide aluminium half shells (pipe / pipe) and 2 angled aluminium half shells (pipe / fitting)

500–630 mm:

The set consists respectively of 8 wide aluminium half shells (pipe / pipe)

**P 250 B**

Ø mm	kg	No.	Ø mm	kg	No.
90	7.6	53039	90	7.6	53039*
110	7.9	53040	110	7.9	53040*
125	7.9	53041	125	7.9	53041*
140	7.8	53042	140	7.8	53042*
160	7.7	53043	160	7.7	53043*
180	7.6	53044	180	7.6	53044*
200	6.7	53045	200	6.7	53045*
225	4.4	53046	225	4.4	53046*
			250	13.9	100000904
			280	11.4	100000388
			315	8.4	100000905
			Adapter 355/250	14.3	100000387

\* adapter is required

**P 500 B**

Ø mm	kg	No.	Ø mm	kg	No.
200	40.0	100000896	315	36.1	100000900*
225	39.1	100000897	355	31.7	100000901*
250	38.6	100000898	400	25.2	100000902*
280	97.7	100000899	450	26.6	100000903*
315	36.1	100000900	500	38.8	53316
355	31.7	100000901	560	42.4	53315
400	25.2	100000902	Adapter 630/500	38.8	53316
450	26.6	100000903			

\* adapter is required

**ROWELD type Professional**

Hydraulic butt welding machine Ø 40–1200 mm.  
Selection of components with a long service life ensures a low maintenance, robust and reliable operating mode.

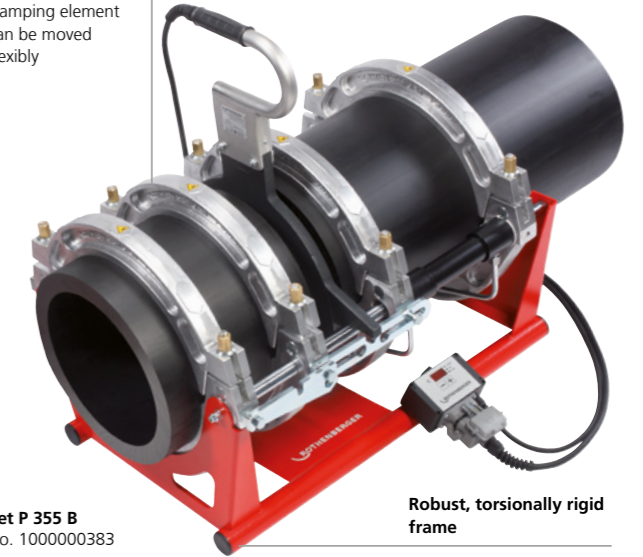
For heating element butt welding of PE, PP and PVDF pipes and moulded bodies. For use on the building site, in pipe trenches, on pipe bridges and in workshops. The ROWELD Hydraulic type Professional with infinite pressure adjustment, an easily legible manometer and pressure reservoir for welding according to DVS and other internationally valid guidelines and standards.

**Working range:**

Description	Ø mm
P 160 B	40–160 mm
P 200 B	63–200 mm
P 250 B	90–250 mm
P 355 B	90–355 mm
P 500 B	200–500 mm
P 630 B	315–630 mm
P 800 B	500–800 mm
P 1200 B	710–1200 mm

**Flexible**

The 3<sup>rd</sup> basic clamping element can be moved flexibly



Set P 355 B  
No. 100000383

**Robust, torsionally rigid frame**

Allows reliable weldings in virtually any environment

**Simple operation**

Ideally matched components allow precise start-up of the pressure

**Safe**

Perfect parking for trimmer and heating plate



Supply of power for heating element and trimmer unit over Professional Hydraulic (P 160 B / P 355 B).



Electronic control for heating element can be placed flexibly using a magnet (P 355 B).



Professional Hydraulic with large, easily legible manometer as well as a pressure limiting and pressure relieving valve.



The pull-off fixture allows rapid lifting out of the heating element.





## ROWELD plastic pipe welding machines type Professional

## Machines 40–1200 mm

Description	Ø Basic unit	Working range	Voltage	Frequency	Power	kg	No.	Basic unit		Hydraulic		Trimmer		Heating plate				
								kg	No.	kg	Power	No.	kg	Power	No.	kg	Power	No.
ROWELD P 160 B Professional basic set	160 mm	40–160 mm	230 V	50 Hz	2.1 kW	76.6	100000997	31.8	1200001027	31.8	580 W	55115	7.9	630 W	1200001043	3.3	800 W	55346H
	160 mm	40–160 mm	230 V	60 Hz	2.1 kW	76.3	100000823	31.8	1200001027	27.6	580 W	1200000905	7.9	630 W	1200001043	3.3	800 W	55346H
ROWELD P 200 B Professional basic set	200 mm	63–200 mm	230 V	50 Hz	2.3 kW	64.8	55391	25.2	55392	28.0	580 W	55115	7.0	630 W	55395	3.6	1000 W	55396
	200 mm	63–200 mm	230 V	60 Hz	2.3 kW	64.4	100000863	25.2	55392	27.6	580 W	1200000905	7.0	630 W	55395	3.6	1000 W	55396
ROWELD P 250 B Professional basic set	250 mm	90–250 mm	230 V	50 Hz	2.9 kW	120.4	1000001080	62.7	1200001029	28.0	580 W	55115	15.0	750 W	1200000802	5.5	1500 W	55180
	250 mm	90–250 mm	230 V	60 Hz	2.9 kW	120.0	100000864	62.7	1200001029	27.6	580 W	1200000905	15.0	750 W	1200000802	5.5	1500 W	55180
ROWELD P 355 B Professional basic set	355 mm	90–355 mm	230 V	50 Hz	3.9 kW	126.3	100000383	56.4	1200000322	28.0	580 W	55115	22.2	750 W	1200001045	9.1	2500 W	1200000324
	355 mm	90–355 mm	230 V	60 Hz	3.9 kW	125.9	100000824	56.4	1200000322	27.6	580 W	1200000905	22.2	750 W	1200001045	9.1	2500 W	1200000324
ROWELD P 500 B Professional basic set	500 mm	200–500 mm	230 V	50 Hz	7.8 kW	241.4	53425	195.0	53401	28.0	1290 W	53309	68.0	1500 W	53404	32.0	4000 W	53403
	500 mm	200–500 mm	230 V	60 Hz	7.7 kW	240.0	100000820	195.0	53401	27.6	1290 W	1200000906	68.0	1500 W	1200000786	32.0	4000 W	53403
	500 mm	200–500 mm	400 V	50 Hz	6.5 kW	377.0	53415	195.0	53401	29.0	1290 W	53309	65.0	1210 W	53405	32.0	4000 W	53406
	500 mm	200–500 mm	400 V	60 Hz	6.4 kW	375.0	100000825	195.0	53401	27.0	1200 W	1200000906	65.0	1210 W	53405	32.0	4000 W	53406
ROWELD P 630 B Professional basic set	630 mm	315–630 mm	400 V	50 Hz	11.1 kW	527.0	53355	245.0	53305	29.0	1290 W	53309	123.0	1770 W	53310	59.0	8000 W	53311
	630 mm	315–630 mm	400 V	60 Hz	11.0 kW	525.0	100000865	245.0	53305	27.0	1200 W	1200000906	123.0	1770 W	53310	59.0	8000 W	53311
ROWELD P 630 B Plus Professional basic set	630 mm	315–630 mm	400 V	50 Hz	11.1 kW	532.5	1000000637	250.5	1200000714	29.0	1290 W	53309	123.0	1770 W	53310	59.0	8000 W	53311
	630 mm	315–630 mm	400 V	60 Hz	11.0 kW	530.5	1000000819	250.5	1200000714	27.0	1200 W	1200000906	123.0	1770 W	53310	59.0	8000 W	53311
ROWELD P 800 B Professional basic set	800 mm	500–800 mm	400 V	50/60 Hz	18.6 kW	747.0	54190	475.0	54191	41.0	2260 W	54177	178.0	4300 W	54192	52.0	12000 W	54193
ROWELD P 1200 B Professional basic set	1200 mm	710–1200 mm	400 V	50/60 Hz	22.6 kW	1210.0	54274	1210.0	54270		on request		357.5	4300 W	54264	118.0	16000 W	54265

\* ROWELD basic sets consist of: The basic unit with high-pressure hoses and 4 base clamping units, an hydraulic device, heating element, milling device, adjusting box, set of tools and transport box. The desired reduction clamping elements can be ordered separately in the desired size or as a set for the respective machine size.

## ROWELD reducer clamp inserts

Narrow basic clamp elements on request

Description	Ø	kg	No.
Set 160	40–140 mm	17.5	55240
Set 200	63–180 mm	20.2	55237
Set 250	90–250 mm	57.6	55241
Set 355	160–355 mm	105.6	100000385
Set 315	90–140 mm	25.0	1000000550
(Supplement with 1000000385)			
Set 500	200–450 mm	276.0	55234
Set 630	315–560 mm	239.6	55232
Set 800	500–710 mm	503.2	1000000935
Set 1200	710–1200 mm	1384.0	1000000936

## ROWELD lift-out devices

Description	Voltage	kg	No.
For P 500 B	400 V	123.0	53410
For P 630 B	400 V	163.0	53323
For P 800 B	400 V	270.0	054176H
For P 1200 B	400 V	350.0	54253

## ROWELD pipe roller, galvanized

Description	Ø mm	Payload	kg	No.
Size 1	up to 315 mm	up to 300 kg	4.0	53055
Size 2	up to 500 mm	up to 500 kg	11.5	53056
Size 3	up to 710 mm	up to 1000 kg	29.0	53057
Size 4	up to 1200 mm	up to 1000 kg	35.0	53058

Sizes 1–3: roller is at a fixed elevation

Size 4: roller height can be adjusted hydraulically

## Spare blade for ROWELD trimmer

Description	Ø	kg	No.
For trimmer P 160 B	160 mm	0.06	55154
For trimmer P 200 B	200 mm	0.06	55154
For trimmer P 250 B	250 mm	0.10	55163
For trimmer P 355 B	355 mm	0.30	55446
For trimmer P 500 B	500 mm	0.40	55233
For trimmer P 630 B	630 mm	0.50	53322
For trimmer P 800 B	800 mm	1.00	1000000875
For trimmer P 1200 B	1200 mm	2.80	1000000876

VPE 1=2 pieces

## Timer LCD

Description	kg	No.
Timer	0.09	L20315



## ROWELD flange Adapter

For centred welding of flanges



Description	Ø	kg	No.
For P 160 B	160 mm	4.2	55299
For P 250 B	250 mm	8.6	55166
For P 355 B	315 mm	9.9	55447
For P 500 B	500 mm	23.3	55236
For P 630 B	630 mm	31.4	53321
For P 800 B	800 mm	110.0	54175
For P 1200 B	1200 mm	260.0	54275



**ROWELD reducer clamp inserts**

40–450 mm:

The set consists respectively of 6 wide aluminium half shells (pipe / pipe) and 2 angled aluminium half shells (pipe / fitting)

500–1000 mm:

The set consists respectively of 8 wide aluminium half shells (pipe / pipe)



<b>P 160 B</b>			<b>P 200 B</b>		
Ø mm	kg	No.	Ø mm	kg	No.
40	2.5	<b>53030</b>	63	2.3	<b>53033*</b>
50	2.4	<b>53031</b>	75	2.2	<b>53034*</b>
63	2.3	<b>53033</b>	90	2.1	<b>53035*</b>
75	2.2	<b>53034</b>	110	2.2	<b>53036*</b>
90	2.1	<b>53035</b>	125	2.2	<b>53037*</b>
110	2.2	<b>53036</b>	140	2.5	<b>53038*</b>
125	2.3	<b>53037</b>	160	2.8	<b>100000933</b>
140	1.5	<b>53038</b>	180	1.9	<b>100000934</b>
			Adapter 200/160	3.0	<b>55394</b>

\* adapter is required

<b>P 250 B</b>			<b>P 355 B</b>		
Ø mm	kg	No.	Ø mm	kg	No.
90	7.6	<b>53039</b>	90	7.6	<b>53039*</b>
110	7.9	<b>53040</b>	110	7.9	<b>53040*</b>
125	7.9	<b>53041</b>	125	7.9	<b>53041*</b>
140	7.8	<b>53042</b>	140	7.8	<b>53042*</b>
160	7.7	<b>53043</b>	160	7.7	<b>53043*</b>
180	7.6	<b>53044</b>	180	7.6	<b>53044*</b>
200	6.7	<b>53045</b>	200	6.7	<b>53045*</b>
225	4.4	<b>53046</b>	225	4.4	<b>53046*</b>
			250	13.9	<b>100000904</b>
			280	11.4	<b>100000388</b>
			315	8.4	<b>100000905</b>
			Adapter 355/250	14.3	<b>100000387</b>

\* adapter is required

<b>P 500 B</b>			<b>P 630 B</b>		
Ø mm	kg	No.	Ø mm	kg	No.
200	40.0	<b>100000896</b>	315	36.1	<b>100000900*</b>
225	39.1	<b>100000897</b>	355	31.7	<b>100000901*</b>
250	38.6	<b>100000898</b>	400	25.2	<b>100000902*</b>
280	37.7	<b>100000899</b>	450	26.6	<b>100000903*</b>
315	36.1	<b>100000900</b>	500	38.8	<b>53316</b>
355	31.7	<b>100000901</b>	560	42.4	<b>53315</b>
400	25.2	<b>100000902</b>	Adapter 630/500	38.8	<b>53316</b>
450	26.6	<b>100000903</b>			

\* adapter is required

<b>P 800 B</b>			<b>P 1200 B</b>		
Ø mm	kg	No.	Ø mm	kg	No.
500	35.2	<b>54181</b>	710	440	<b>54281</b>
560	36.8	<b>54182</b>	800	384	<b>54263</b>
630	88.0	<b>54183</b>	900	320	<b>54262</b>
710	88.0	<b>54184</b>	1000	240	<b>54261</b>

**ROWELD type Standard**

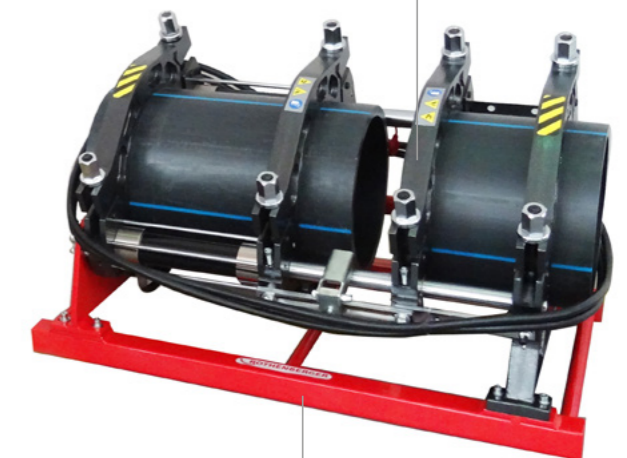
**Hydraulic butt welding machine Ø 63–630 mm.**  
The robust and economic machine with easy-to-use elements ensure a reliable operation.

For heating element butt welding of PE, PP and PVDF pipes and moulded bodies. For use on construction sites, trenches and workshops. The ROWELD hydraulic type Standard with a simple design, robust components & easy-to-use elements works in every environment.

**Working range:**

Description	Ø mm
E 160 B	63–160 mm
E 250 B	90–250 mm
E 315 B	160–315 mm
E 355 B	160–355 mm
E 450 B	200–450 mm
E 500 B	200–500 mm
E 630 B	315–630 mm
E 800 B	450–800 mm
E 1000 B	630–1000 mm
E 1200 B	630–1200 mm

Other sizes on request.

**Flexible**The 3<sup>rd</sup> basic clamping element can be moved flexibly**Robust, torsionally rigid frame**

Allows reliable weldings in virtually any environment

**Simple operation**

Easy monitoring of all necessary parameter

**Safe**

Perfect parking for trimmer and heating plate



Supply of power for heating element and trimmer unit by the hydraulic. Additional plugs for external data logger (optional accessories).



Simple &amp; save monitoring of all necessary welding parameters.



Multilayer-inserts for the needed pipe sizes included in the machine sets.



Angled frame sizes 450/500/630 mm ensure a better handling during the welding process.





ROWELD plastic pipe welding machines type Standard\*

Machines Ø 63–630 mm

Description	Ø Basic unit	Working range	Voltage	Frequency	Power	kg	No.
ROWELD E 160 B Standard set	160 mm	63–160 mm	220 V	50 Hz	2.45 kW	57.4	1000003642
ROWELD E 250 B Standard set	250 mm	90–250 mm	220 V	50 Hz	3.85 kW	82.2	1000003643
ROWELD E 315 B Standard set	315 mm	160–315 mm	220 V	50 Hz	4.45 kW	124.4	1000003644
ROWELD E 355 B Standard set	355 mm	160–355 mm	220 V	50 Hz	5.58 kW	140.7	1000003645
ROWELD E 450 B Standard set	450 mm	200–450 mm	380 V	50 Hz	8.38 kW	327.0	1000003646
ROWELD E 500 B Standard set	500 mm	200–500 mm	380 V	50 Hz	9.50 kW	482.0	1000003647
ROWELD E 630 B Standard set	630 mm	315–630 mm	380 V	50 Hz	12.35 kW	502.0	1000003648

\* ROWELD Standard sets consist of: The basic unit with high-pressure hoses and 4 base clamping units, an hydraulic device, heating element, milling device, adjusting box, set of tools, multilayer inserts and transport box.

ROWELD lift-out devices



Description	Voltage	kg	No.
For E 450/500/630 B	400 V	123.0	1000003649

ROWELD flange Adapter

For centred welding of flanges



Description	Ø	kg	No.
For E 160 B	160 mm	4.2	1000003657
For E 250 B	250 mm	8.6	1000003658
For E 315 B	315 mm	13.0	1000003659
For E 355 B	355 mm	14.9	1000003660
For E 450 B	450 mm	25.0	1000003661
For E 500 B	500 mm	28.3	1000003662
For E 630 B	630 mm	34.0	1000003663

Option parts: Reducer inserts sets (single/two piece)



E 160 B No. 1000003664		E 250 B No. 1000003666		E 315 B No. 1000003667		E 355 B No. 1000003669	
Ø mm	kg	Ø mm	kg	Ø mm	kg	Ø mm	kg
63	4.0	63	11.2	90	18.7	90	24.8
75	3.8	75	11.0	110	18.0	110	24.2
90	3.5	90	10.7	125	17.6	125	23.7
110	3.2	110	10.5	140	17.4	140	23.7
125	2.8	125	10.0	160	12.7	160	20.0
140	1.8	140	8.1	180	12.1	180	19.3
		160	7.5	200	11.7	200	18.8
		180	6.5	225	10.0	225	17.2
		200	6.1	250	8.5	250	15.7
		225	4.2	280	6.0	280	13.2
				315	8.2		

ROWELD Manual butt welding machine

Manual butt welding machines Ø 20–250 mm

For heating element butt welding of PE, PP and PVDF pipes and moulded bodies. ROWELD P110 is also suitable for manufacturing segmented bends. All machines with a different force scale which allows precise adjustment of all welding pressures.

Multi-faceted options for clamping

All commonly used moulded bodies installed in a sanitary installation can be clamped

Anti-slip Ø 40–140 mm reduction clamping inserts with clamping force regulation

Secure mounting of pipes, moulded bodies, tight 45° forks and 90° bends



The pressure applied can be adjusted separately on both sides

One-sided and two-sided milling is possible

Direct force transmission and a clearly arranged force scale

Precise force adjustment

Description	Trimmer drive	Heating element	Transport/ fastening	Pipe - Pipe	Pipe - moulded body	Pipe-stub flange weldings	segmented bends
ROWELD P 110	manual	electronically regulated	Table clamps	•	•	•	•
ROWELD P 160	elektronic	electronically regulated	Table, transport wagon or frame	•	•	•	
ROWELD P 250 A	elektronic	electronically regulated	Transport box	•	•	•	

ROWELD P 160 Saniline: Compact design



ROWELD P 250 A



Joints between fittings and pipes with narrow and wide clamping elements.



ROWELD P 110: By adjusting the basic clamping element angles on both sides (15° each side) segmented bends can be produced.





## ROWELD plastic pipe manual welding machines

## Machines Ø 20–250 mm

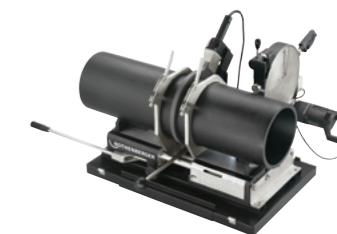
Description	Ø Basic unit	Working range incl. Reducer inserts	Voltage	Frequency	Power	kg	No.	Basic unit		Trimmer		Heating plate			
								kg	No.	kg	Power	No.	kg	Power	No.
ROWELD P 110	110 mm	20–110 mm	230 V	50/60 Hz	800 W	43.0	<b>55844</b>	6.8	<b>55787</b>	1.9	manuel	<b>55826</b>	2.6	800 W	<b>55918</b>
			110/115 V	50/60 Hz	800 W	43.0	<b>55924</b>	6.8	<b>55787</b>	1.9	manuel	<b>55826</b>	2.6	800 W	<b>55324</b>
ROWELD P 160 Saniline	160 mm	40–160 mm	230 V	50 Hz	1850 W	53.0	<b>1000002964</b>	34.4	<b>L90049</b>	6.0	1050 W	<b>L90099</b>	3.2	800 W	<b>55316</b>
ROWELD P 160 Saniline	160 mm	40–160 mm	110/115 V	60 Hz	1850 W	53.0	<b>1000002968</b>	34.4	<b>L90049</b>	6.0	1050 W	<b>L90196</b>	3.2	800 W	<b>55851</b>
ROWELD P 160 Saniline special edition	160 mm	40–160 mm	230 V	50 Hz	1850 W	62.5	<b>54004</b>	34.4	<b>1200000620</b>	6.0	1050 W	<b>L90099</b>	3.2	800 W	<b>55316</b>
ROWELD P 250 A	250 mm	40–250 mm	230 V	50 Hz	2700 W	131.0	<b>55795</b>	36.1	<b>55768</b>	11.6	750 W	<b>L81993</b>	5.4	1500 W	<b>55317</b>
			110/115 V	60 Hz	5900 W	131.0	<b>55796</b>	36.1	<b>55738</b>	11.6	750 W	<b>L81993</b>	5.4	1500 W	<b>55854</b>

**Set (No. 55844) includes:** Basic machine (No. 55787) with table mounting brackets, manual trimmer unit (No. 55826), electronically controlled heating plates, basic clamping set R/R (No. 55807) (Ø 110 mm) and basic clamping set R/F, left (No. 55808) (Ø 110 mm), reducer clamping inserts R/R and R/F for Ø 40–90 mm, assembly tools, table mounting clamp (No. 55524), transport box (No. 55832)

**Set (No. 1000002964) includes:** Basic unit with electric trimmer, electrically adjustable heating element, removable pipe support Ø 160 mm, reducer clamp and support set for Ø 40, 50, 63, 75, 90, 110 and 125 mm in ROCASE 4414 (No. 1000002970), installation tools, mobile work and transport frame (No. 1000002971)

**Set (No. 55795) includes:** holder for heating plate, electrically adjustable heating plate, basic clamping set Ø 160 mm and 250 mm support fork inserts Ø 160 mm and 250 mm, reducer inserts and support fork inserts from Ø 40–140 mm and Ø 180–225 mm, installation tools, steel transport box 800 x 520 x 765 mm (LxWxH) and steel carrying case for reducer and support fork inserts

**ROWELD P 250 A**  
No. 55795



**Set ROWELD P 250 A**  
No. 55795 / 55796



**Set ROWELD P 110**  
No. 55844 / No. 55924



**Saniline with assembly and transport frame**  
No. 1000002964



## Transport

## Transport frame

Description	kg	No.
Assembly and transport frame for the P 160	11.3	<b>1000002971</b>
Collapsible transport wagon for the P 160	20.0	<b>56051</b>

**Assembly and transport frame**  
No. 1000002971



**Folding trolley**  
No. 56051



## Assembly, storage

## Transport box

Description	L x B x H	kg	No.
For P 110	520 x 350 x 370 mm	14.2	<b>55832</b>
For P 250 A	800 x 520 x 765 mm	25.0	<b>55759</b>
For P 160 Saniline	390 x 300 x 105 mm	0.8	<b>54020</b>
Reducer inserts and table foot			
table mounting clamp for P 110 heating plate		0.5	<b>55524</b>

## Spare blade for ROWELD trimmer

Description	kg	No.
For P 110	0.05	<b>55152</b>
For P 160	0.10	<b>55685</b>
For P 160	0.05	<b>55684</b>
For trimmer (Saniline)	0.01	<b>55686</b>
For P 250 A	0.10	<b>55163</b>
<b>VPE 1 = 2 pieces</b>		

## ROWELD trimmer adaptor

For trimming 45° branches, replaceable blades Ø 40–75 mm

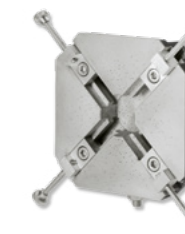


Description	kg	No.
For P 160 Saniline	0.65	<b>54040</b>

## ROWELD flange adapter

For centred welding of flanges

Description	kg	No.
For P 110	1.5	<b>55199</b>



## Timer LCD



Description	kg	No.
For P 160 Saniline	0.65	<b>54040</b>



Base clamps

Base clamps ROWELD P 110 No. 55808 / No. 55809

Base clamps ROWELD P 110 No. 55807

Base clamps ROWELD P 160 Saniline No. 54082

Base clamps ROWELD P 250 A No. 55717

Base clamps ROWELD P 250 A No. 55742



Description	Ø mm	Model	kg	No.
Base clamps for ROWELD P 110	110	wide for pipe connections	2.5	55807
Base clamps for ROWELD P 110	110	narrow for fitting connections left	1.0	55808
Base clamps for ROWELD P 110	110	narrow for fitting connections right	1.0	55809
Base clamps for ROWELD P 160 Saniline	160		5.3	54082
Conversion Kit for ROWELD P 160 Saniline		No. 54082 + red. clamp 40, 50, 63, 75, 90, 110, 125	11.2	54080
Base clamps for ROWELD P 250 A	160		7.2	55742
Base clamps for ROWELD P 250 A	250		10.1	55717

ROWELD reducer inserts



Reducer inserts wide for ROWELD P 110			Reducer inserts narrow for ROWELD P 110		
Ø mm	kg	No.	Ø mm	kg	No.
20	1.9	55318	20	0.6	55319
25	1.9	55126	25	0.6	55134
32	1.8	55125	32	0.5	55133
40	1.7	55124	40	0.5	55132
50	1.7	55123	50	0.5	55131
56	1.6	55122	56	0.5	55130
63	1.4	55121	63	0.5	55129
75	1.6	55120	75	0.4	55128
90	1.1	55119	90	0.3	55127



Reducer inserts for ROWELD P 160 Saniline			Reducer inserts for ROWELD P 160 Saniline		
Ø mm	kg	No.	Ø mm	kg	No.
40	1.6	54083	90	1.6	54088
50	1.6	54084	110	1.7	54089
56	1.6	54085	125	1.5	54090
63	1.6	54086	140	1.5	54091
75	1.6	54087			



Reducer inserts for ROWELD P 250 A			Reducer inserts for ROWELD P 250 A		
Ø mm	kg	No.	Ø mm	kg	No.
32	1.9	55753	110	1.3	55746
40	1.9	55752	114	1.2	55745
50	1.9	55751	125	1.1	55744
56	1.9	55750	140	0.8	55743
63	1.8	55749	180	2.5	55721
75	1.7	55748	200	2.1	55718
90	1.5	55747	225	1.2	55719

ROFUSE Sani 160/315

Universal electrofusion welding unit for PE and PP drainage pipe with 230 V welding fittings up to Ø 315 mm.

- 40–160 mm: Geberit, Akatherm-EUR, Coes, Valsir, WAVIN-Duo, Aquatherm and Vulcathene-Euro
- 200–315 mm: Valsir, Akatherm, Eurofusion, Geberit and Coes

- Microprocessor controlled welding unit with automatic temperature and voltage compensation
- Icon-based software for intuitive and easy operation
- Visual monitoring of the welding process via large illuminated display
- Robust and impact-resistant housing (IP 54)
- Automatic welding parameter detection

Technical Data:

Input voltage:	180–280 V (230 V)
Frequency:	40 - 70 Hz
Output current:	5 A controlled
Protection class:	IP 54
Working range:	up to Ø 160 mm (Sani 160) up to Ø 315 mm (Sani 315)
Temperature range :	-5 °C up to +40 °C
Weight:	2.4 kg (Sani 160)
Dimension:	110 x 200 x 80 mm
Welding cable:	3 m



Impact-resistant housing (IP 54)  
Robust

Large illuminated display  
Easy monitoring of the welding process

Intuitive and easy operation  
Icon-based software control with automatic welding parameter detection

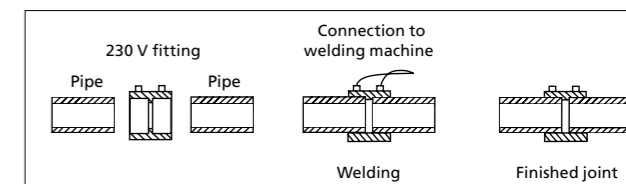
Welding in confined spaces  
90° angled plugs ensure low installation height

3 m welding cable  
Large operating radius

90° angled plugs



Robust packaging in ROCASE



ROFUSE Sani 160 / 315

Description	kg	No.
ROWELD ROFUSE Sani 160 in ROCASE	2.4	1000002630
ROWELD ROFUSE Sani 315 in ROCASE	3.9	1000002631



**ROFUSE 400/1200 TURBO**

Two universal electrofusion welding units for PE- and PP-fittings up to Ø 400 and up to Ø 1200 mm diameter.

- **Safety:** The Heat-Control (HC) function evaluates based on ambient temperature, device temperature and fitting and checks if the next fitting can be welded completely. This process is fully automated and indicated through a green or a red light shown on the display. This prevents any emergency shut-off of the unit due to overheating.
- **Performance:** Due to the Active-Cooling (AC) function, the unit is ideally fitted for continuous use since the heat removal is maximised by the installed ventilator.
- **Complete solution:** Ideal for use on a job site. All cables are securely stowed away inside the robust housing. The housing also offers sufficient space for accessories, tools or fittings.
- **Read out software for free:** all saved welding sequences can be transferred to a computer with a USB drive. From the computer the data can be archived and printed using the read out programme "RODATA 2.0".
- **Barcode generator:** RODATA 2.0 offers also the possibility to encrypt the name of the welder and the name of the construction site as a barcode. This barcode can then be scanned at the job site.

**Safety and performance –  
the complete solution for  
piping systems**

**Technical Data:**

<b>Mains voltage:</b>	230 V
<b>Frequency:</b>	50 Hz / 60 Hz
<b>Output:</b>	3.000 VA, 70 % ED
<b>Output (nominal current):</b>	80 A
<b>Welding voltage:</b>	8-48 V
<b>Ambient temperature:</b>	-10 °C up to +40 °C
<b>Operating range</b>	
<b>ROFUSE 400 TURBO:</b>	Fittings up to Ø400 mm
<b>ROFUSE 1200 TURBO:</b>	Fittings up to Ø1200 mm
<b>Protection class:</b>	IP 54
<b>Transmission interface:</b>	USB v 2.0
<b>Storage capacity:</b>	2.000 Welding logs
<b>Weight incl. welding cable:</b>	about 21.5 kg

**(Basic unit without accessories)**

**SKZ\* checked**

**USB port**

Simple data transmission

**A clear display**

Allows intuitive operation.  
The program sequence can  
be adapted individually

**Wireless scanner**

Simple and unlimited handling

**A practical pocket**

for the welder's name and  
scan site-code

**Height-adjustable cover**

Can be used as a sun shield

**A robust housing**

The cable can be stowed  
securely

**Longer welding through Active Cooling:**

The Active-Cooling (AC) function improves the heat removal caused by the installed ventilator. About 20% more fittings can be welded in series with ROFUSE TURBO.

**ROFUSE 400 TURBO**

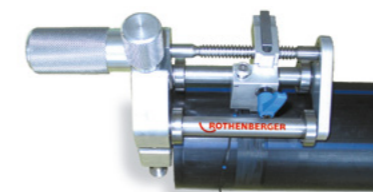
max. mm	kg		Nr.
400	21.5	1 1	100000999

**ROFUSE 1200 TURBO**

max. mm	kg		Nr.
1200	21.5	1 1	1000001000

**Peeling device**

For secure, quick preparation of the pipe, in transport case.



Description	Ø	No.
Size I	32–110 mm	53240
Size II	110–500 mm	53250

**Clamping device**

For alignment and fixation of the pipe before and during the welding cycle.



Description	Ø	No.
Double clamp short	75 mm	53255
Double clamp short	90 mm	53256
Double clamp short	110 mm	53257
Double clamp short	125 mm	53258
Double clamp short	140 mm	53259
Double clamp short	160 mm	53260
Double clamp short	180 mm	53261
Double clamp short	200 mm	53262
Double clamp short	225 mm	53263

**Double clamp short**

For alignment and fixation of the pipe before and during the welding cycle.



Description	Ø	No.
Double clamp adjustable	32 mm	53251
Double clamp adjustable	40 mm	53252
Double clamp adjustable	50 mm	53253
Double clamp adjustable	63 mm	53254

**Squeezing device**

- **Mechanical:**  
Range of use from Ø 32–63 mm.  
To avoid damage to the squeezed area, distance plates can be adjusted on the side.
- **Hydraulic:**  
Range of use from Ø 75–225 mm.  
Functions as mentioned above.  
With this unit you can reform squeezed pipes with the help of the rounding shells.



Description	Ø	No.
Squeezing device mechanical	32–63 mm	53200
Squeezing device hydraulic	75–180 mm	53210
Squeezing device hydraulic	160–225 mm	53220

**Quad clamps**

For manufacturing standard connections with rod shaped material Ø 63–225 mm.



Description	Ø	No.
Quad clamp	75 mm	53272
Quad clamp	90 mm	53273
Quad clamp	110 mm	53274
Quad clamp	125 mm	53275
Quad clamp	140 mm	53276
Quad clamp	160 mm	53277
Quad clamp	180 mm	53278
Quad clamp	200 mm	53279
Quad clamp	225 mm	53280

**Re-rounding clamps**

For fixation of the welding depth and for rounding PE pipes after squeezing.



Description	Ø	No.
Re-rounding clamp	25 mm	53281
Re-rounding clamp	32 mm	53282
Re-rounding clamp	40 mm	53283
Re-rounding clamp	50 mm	53284
Re-rounding clamp	63 mm	53285



## ROWELD P 63 S-6 Sword

Socket welding unit Ø 20–63 mm for use with heating spigots and heating sockets

With three simultaneously usable combinations for welding sockets, pipes and fittings according to DVS guidelines. With a high-quality PTFE anti-stick coating with a long service life.

### Working range:

Description	Ø mm	Model
P 63 S-6 thermostatic	20–63 mm	thermostatic
P 63 S-6 electronic	20–63 mm	electronic



P 63 S-6 electronic  
No. 053896X

## ROWELD P 125

Socket welding unit for use with heating spigots and heating sockets for Ø 16–125 mm, as well as adaptor plates for butt welding

With three simultaneously usable welding combinations for free-handed working or workbench assembly using table mounting clamp. Heating spigots and heating sockets with a high-quality PTFE anti-stick coating with a long service life.

### Working range:

Description	Ø mm
P 125 mit Heating spigots/ Heating sockets	63–125 mm
P 125 Adaptor plate for butt welding	up to 125 mm



ROWELD P 125  
No. 55321



## ROWELD HE Heating plates

Heating plates for butt welding of PE, PP and PVDF pipes and fittings with Ø 20–250 mm

With a high-quality PTFE anti-stick coating with a long service life according to DVS guidelines.

### Working range:

Description	Ø mm Heating plate
Heating plate 120	120 mm
Heating plate 200	200 mm
Heating plate 300	300 mm



## ROWELD P 63 S-6 SWORD

Description	mm	Performance	Frequency	kg	Model	230 V No.	110/115 V No.
P 63 S-6 set	20, 25, 32	800 W	50/60 Hz	4.30	thermostatic	<b>053892X</b>	<b>053894X</b>
P 63 S-6 set	20, 25, 32, 40, 50, 63	800 W	50/60 Hz	5.30	thermostatic	<b>053893X</b>	<b>053895X</b>
P 63 S-6 set	20, 25, 32	800 W	50/60 Hz	4.30	electronic	<b>053890X</b>	
P 63 S-6 set	20, 25, 32, 40, 50, 63	800 W	50/60 Hz	5.30	electronic	<b>053891X</b>	
P 63 S-6 single unit		800 W	50/60 Hz	1.78	thermostatic	<b>053897X</b>	
P 63 S-6 single unit		800 W	50/60 Hz	1.78	electronic	<b>053896X</b>	

ROWELD sets consist of: Heating spigots and heating sockets in the specified working area, main unit, allen wrench, cylindrical screws, plastic case

### Heating spigots/Heating sockets (Form A) for P 63 S-6 Sword

mm	g	No.	mm	g	No.
20	80	<b>53511</b>	40	260	<b>53514</b>
25	100	<b>53512</b>	50	370	<b>53515</b>
32	170	<b>53513</b>	63	600	<b>53516</b>

## ROWELD P 125

Description	mm	Performance Watt	kg	Model	230 V 50/60 Hz
P 125 single unit		1300	3.10	electronic	<b>55321</b>
P 125 set	63, 75, 90, 110, 125	1300	17.05	electronic	<b>55546</b>

Set (No. 5.5546) includes: Basic unit, table mounting clamp, heating spigot / heating socket, 63-75, 90, 100 and 125 mm, steel case, adaptor plate (1 set = 2 pc)

### Heating spigots/Heating sockets (Form A) for ROWELD P 125

Description	kg	No.	Description	kg	No.	Description	kg	No.	Description	kg	No.
16	0.06	<b>55585</b>	20	0.08	<b>55589</b>	50	0.37	<b>55593</b>	90	1.33	<b>55596</b>
17	0.06	<b>55586</b>	25	0.10	<b>55590</b>	63	0.60	<b>55594</b>	110	2.07	<b>55597</b>
18	0.08	<b>55587</b>	32	0.17	<b>55591</b>	75	0.89	<b>55595</b>	125	2.33	<b>55598</b>
19	0.08	<b>55588</b>	40	0.26	<b>55592</b>						

### Accessories

Description	kg	No.	Description	kg	No.
Table mounting clamp for P 125	0.45	<b>55524</b>	Floor stand for ROWELD P 125	0.44	<b>55539</b>
Adaptor plate for butt welding ROWELD P 125 Ø 160 mm (1 set = 2 pc)				1.15	<b>55536</b>

## ROWELD HE Heating plates

Heating plates Ø mm	Performance Watt	Control Model	kg	230 V 50/60 Hz	110/115 V 50/60 Hz
120/45°	500	elektronik	1.80	<b>55518</b>	<b>55517</b>
200	800	elektronik	3.25	<b>55316</b>	<b>55851</b>
300	1500	elektronik	5.35	<b>55317</b>	<b>55854</b>

### Accessories

Description	kg	No.
Table mounting clamp	0.45	<b>55524</b>

Tools for manual or electric cutting of pipes up to Ø 355 mm as well as for clean deburring or chamfering. Is supplemented by tools for mounting the pipes for secure working.

#### Plastic pipe shears



#### Plastic pipe cutters



#### Plastic pipe cutting and chamfering tools



#### Plastic pipe cutter XL



#### Orbital circular saw



#### Deburrer



#### Chamfering tools



#### Mounting



Description	Cutting	Deburring	Chamfering	Fixation	PE	PP	PVC	PEX	PVDF	PB	MSR	Noise dampening drainpipes	mm	Inch
<b>Plastic pipe shears</b>														
ROCUT TC 26	•				•	•	•	•	•	•			0-26	0-1.1/4
ROCUT TC 32	•				•	•	•	•	•	•			0-32	0-1.3/8
ROCUT PS 35	•				•	•	•	•	•	•			6-35	1/4-1.3/8
ROCUT TC 42	•				•	•	•	•	•	•			0-42	0-1.5/8
ROCUT TC 42 Twin Cut	•				•	•	•	•	•	•			0-42	0-1.5/8
ROCUT PS 26/42 S	•				•	•	•	•	•	•			6-42	1/4-1.5/8
ROCUT TC 50	•				•	•	•	•	•	•			0-50	0-2
ROCUT PS 63	•				•	•	•	•	•	•			0-63	0-2.1/2
ROCUT TC 75	•				•	•	•	•	•	•			0-75	0-3

#### Plastic pipe cutters

TUBE CUTTER 67 PL	•	•			•	•	•	•	•	•		•	6-67	1/4-2.5/8
TUBE CUTTER 125 PL	•	•			•	•	•	•	•	•		•	50-125	2-5
TUBE CUTTER 168 PL	•	•			•	•	•	•	•	•		•	110-168	4-6.5/8
TC 35 MSR	•	•									•		6-35	1/4-1.3/8
TC 42 PRO MSR	•	•									•		6-42	1/4-1.5/8
TC 42 PRO PVC	•	•											6-42	1/4-1.5/8

#### Plastic pipe cutting and chamfering tools

ROCUT 110	•		•	•	•	•	•	•	•	•		•	32-110	-
ROCUT 160	•		•	•	•	•	•	•	•	•		•	110-160	-

#### Plastic pipe cutter XL

ROCUT XL 125	•				•								≤125	≤4
ROCUT XL 225	•				•								≤225	≤8
ROCUT XL 315	•				•								≤315	≤12

#### Orbital circular saw

UKS 160/355	•				•	•	•						160-355	6-12
-------------	---	--	--	--	---	---	---	--	--	--	--	--	---------	------

#### Deburrer

Unigrat Fast Deburrer		•			•	•	•	•	•	•	•	•		
Gratfix HSS Deburrer		•			•	•	•	•	•	•	•	•		

#### Chamfering tools

Plastic pipe size 1			•	•	•	•	•	•	•	•	•	•	16-110	5/8-4.3/4
Plastic pipe size 2			•	•	•	•	•	•	•	•	•	•	32-160	1.1/4-6

#### Mounting

Easygrip					•	•	•	•	•	•	•	•	20-160	3/4-6
----------	--	--	--	--	---	---	---	---	---	---	---	---	--------	-------



**ROCUT TC 42 TWIN CUT**

Plastic pipe shears up to Ø 75 mm (3")



No. 1000003011

**ROCUT TC 26/TC 32  
PS 26/PS 42 S/PS 35 S**

Plastic pipe shears up to Ø 42 mm (1.5/8")

(TC 32 for multi-layer composite pipes MSR)



No. 52040

No. 52005

No. 55005 / 55015

**ROCUT TC 63 Professional**

Plastic pipe shear up to Ø 63 mm (2.1/2")

(TC 63 Professional for PVC pipes)



No. 52030

**ROCUT TC 50/TC 75 Professional**

Plastic pipe shears up to Ø 75 mm (3")



No. 52015

No. 52010

Description	mm	Inch	g	kg	No.
ROCUT TC 26	0-26	0-1.1/4"	370	1	4 <b>52005</b>
ROCUT TC 32	0-32	0-1.3/8"	220	1	4 <b>52040</b>
ROCUT PS 35	6-35	1/4-1.3/8"	740	1	20 <b>55005</b>
ROCUT PS 26/42 S adjustable	6-42	1/4-1.5/8"	950		<b>55015</b>
ROCUT TC 50	0-50	0-2"	600	1	4 <b>52010</b>
ROCUT TC 63	0-63	0-2.1/2"	700	1	<b>52030</b>
ROCUT TC 75	0-75	0-3"	1600	1	<b>52015</b>
Counter display TC 26					1(10) <b>052005D</b>

**Accessories**

Description	mm	Inch	g	kg	No.
Spare stainless steel blade for TC 32	0-32	1.3/8"	120	1	<b>52041</b>
Spare stainless steel blade for PS 35 S	6-35	1/4-1.3/8"	30	1	<b>55006</b>
Spare stainless steel blade for PS 26/42 S	6-42	1/4-1.5/8"	60	1	<b>55007</b>
Spare stainless steel blade for TC 42 Twin Cut	0-42	0-1.5/8"	120	1	<b>1000003104</b>
Spare stainless steel blade for TC 50	0-50	0-2"	120	1	<b>52011</b>
Spare stainless steel blade for TC 63	0-63	0-2.1/2"	130	1	<b>52031</b>
Spare stainless steel blade for TC 75	0-75	0-3"	190	1	<b>52016</b>

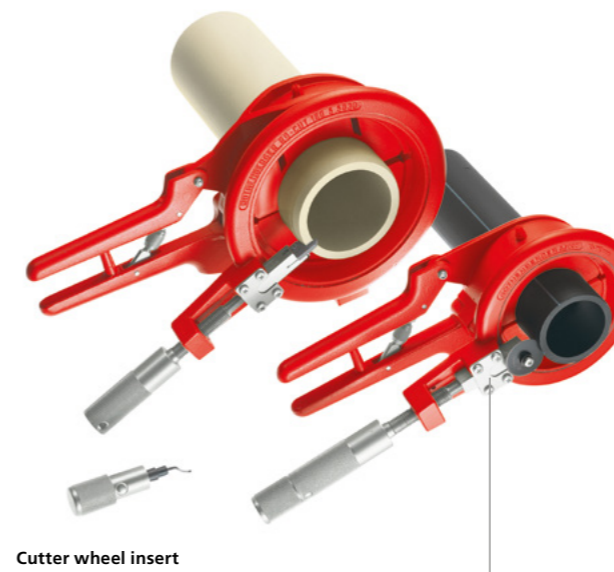
**ROCUT 110/ROCUT 160**

Cutting and chamfering tool for right-angled cutting and chamfering (15°), Ø 32-160 mm

Suitable for thin and thick-walled PVC, PE, PP, PEX, PB and PVDF pipes, as well as sound-insulated drain pipes. Utmost precision in a single operation.

Set (No. 55035) includes: ROCUT 110 (No. 55020), internal deburrer (No. 55018), 2 clamping set 50 and 75mm, cutter blade shaft with automatic copying and HM cutter blade inserts 7,5mm (No. 54960), ROCASE inlay (No. 1300005864), ROCASE 4414 red w/o inlay (No. 1300003541)

Set (No. 55063) includes: ROCUT 160 (No. 55030), internal deburrer (No. 55018), 2 clamping sets, cutter blade shaft with automatic copying and, HM cutter blade insert 12,5mm (No. 55019), ROCASE inlay (No. 1300005864), ROCASE 4414 red w/o inlay (No. 1300003541)



Cutter wheel insert

Special accessories for PE, PP, PEX, PB and sound-insulated pipes

No. 55035

No. 55063

Description	Working range Ø mm	kg	No.
ROCUT 110 set	50, 75, 110	3.9	<b>55035</b>
ROCUT 160 set	110, 125, 160	5.6	<b>55063</b>

**Accessories**

Description	g	No.
Internal deburrer with blade	150	<b>55018</b>
Cutter blade for internal deburrer	10	<b>21652</b>
Plastic carrying case for ROCUT 110	850	<b>55016</b>
Plastic carrying case for ROCUT 160	1400	<b>55017</b>



Integrated internal deburrer is stored in the handle

Always on hand



Centred and safe cutting geometry pipe clamping, including non-round pipes

Continuously adjustable pipe clamping pressure



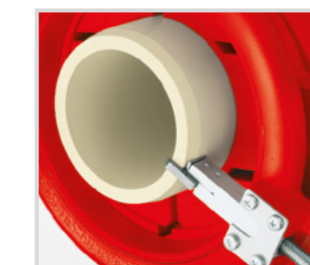
For hands-free operation



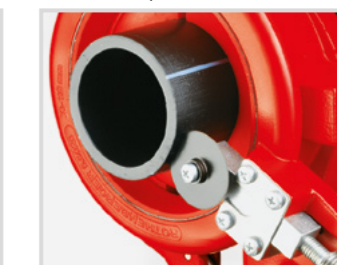
Clamping in a parallel vice



ROCUT 160 with cutter wheel



ROCUT 110 with cutter blade (No. 54950) (special accessories)



## Accessories plastic pipe cutting and chamfering tools

### ROCUT 110

#### Basic Unit Ø 32–110 mm

For use with clamping sets Ø 32–100 mm, without internal deburrer with standard cutter blade shaft and cutter blade (No. 55029)

Description	mm	g	No.
Basic unit ROCUT 110	110	2450	<b>55020</b>
Clamping set *	100	110	<b>55048</b>
Clamping set *	90	150	<b>55021</b>
Clamping set *	80	170	<b>55047</b>
Clamping set *	75	210	<b>55022</b>
Clamping set *	63	220	<b>55023</b>
Clamping set *	56	270	<b>55024</b>
Clamping set *	50	290	<b>55025</b>
Clamping set *	40	300	<b>55027</b>
Clamping set *	32	330	<b>55026</b>

\* Clamping set (1 set = 2 semi-circular segments)

### HM cutter Blade Inserts

#### ROCUT 110 and ROCUT 160



Description	Wall thickness	g	No.
Cutter blade shaft with automatic copying and HM cutter blade inserts	7.5 mm	110	<b>54960</b>
Cutter blade shaft with automatic copying and HM cutter blade inserts	12.5 mm	120	<b>54961</b>
Spare HM cutter blade insert for cutting and chamfering 15°	7.5 mm	10	<b>55029</b>
Spare HM cutter blade insert for cutting and chamfering 15°	12.5 mm	20	<b>55019</b>

### ROCUT 160

#### Basic Unit Ø 110–160 mm

Cutter blade shaft with automatic copying and cutter blade (No. 55019), for use with clamping sets Ø 110–140 mm, without internal deburrer



Description	mm	g	No.
Basic unit ROCUT 160	160	3450	<b>55030</b>
Clamping set *	140	180	<b>55031</b>
Clamping set *	125	250	<b>55032</b>
Clamping set *	110	310	<b>55033</b>

\* Clamping set (1 set = 2 semi-circular segments)

### Cutter Wheels

#### ROCUT 110 and ROCUT 160



Description	Wall thickness	g	No.
Cutter wheel shaft with Cutter wheel (No. 55074)	16.0 mm	130	<b>54950</b>
Spare cutter wheels (2 pieces)	8.6 mm	10	<b>055053D</b>
Spare cutter wheels (3 pieces)	13.0 mm	20	<b>055054D</b>
Spare cutter wheels (4 pieces)	16.0 mm	20	<b>055074D</b>

## TUBE CUTTER 67 / 125 / 168 PL Automatic

### Telescopic ratchet pipe cutter Ø 6–168 mm (1/4–6.5/8")

For precise cutting of PP, PE, PEX, PB and PVDF pipes as well as sound-insulated drain pipes



Description	mm	Inch	Wall thickness	kg	No.
TC 67 PL	6–67	1/4–2.5/8"	7 mm	0.7	1 <b>70031</b>
TC 125 PL	50–125	2–5"	13 mm	1.6	1 <b>70032</b>
TC 168 PL	110–168	4–6.5/8"	16 mm	1.7	1 <b>70033</b>

### Accessories

Description	Wall thickness	kg	No.
Spare cutter wheels for TC 67 PL	7.0 mm	0.1	3 <b>070028D</b>
Spare cutter wheels for TC 125 PL	13.0 mm	0.2	3 <b>055054D</b>
Special size TC 125 PL	8.6 mm	0.1	2 <b>055053D</b>
Spare cutter wheels for TC 168 PL	16.0 mm	0.2	2 <b>055074D</b>
Special size TC 168 PL	8.6 mm	0.1	2 <b>055074D</b>

## ROCUT XL

### Pipe cutter PE

For cutting-off pipes in trenches, for making repairs or extensions



## TUBE CUTTER 35 MSR / 42 MSR PRO / 42 PRO PVC

### Telescopic pipe cutter Ø 6–42 mm (1/4–1.3/8")

TUBE CUTTER 35 MSR and 42 MSR PRO for multi-layer composite pipe. TUBE CUTTER 42 PRO PVC for PVC pipes



Description	mm	Inch	kg	No.
TC 35 MSR	6–35	1/4–1.3/8"	440	1 10 <b>70108</b>
TC 42 PRO MSR	6–42	1/4–1.5/8"	510	1 10 <b>70109</b>
TC 42 PRO PVC	6–42	1/4–1.5/8"	510	1 4 <b>70072</b>

### Accessories

Description	kg	No.
Spare cutter wheels for TC 35/42 MSR	19	1 5 <b>070188D</b>
Spare cutter wheels for TC 42 PVC	10	3 <b>070028D</b>

Description	mm	Inch	Wall thickness	No.
ROCUT XL 125 to 125 mm	up to 4"	max.	11.4 mm	<b>150000789</b>
ROCUT XL 225 to 225 mm	up to 8"	max.	18 mm	<b>150000790</b>
ROCUT XL 315 to 315 mm	up to 12"	max.	18 mm	<b>150000792</b>

### Replacement blade

Scope of delivery: 1 replacement blade + fastening screws

Description	kg	No.
For ROCUT XL 125	0.3	<b>150000793</b>
For ROCUT XL 225	0.7	<b>150000794</b>
For ROCUT XL 315	2.1	<b>150000795</b>

An optimised cutting angle for easier pipe cutting.



The lower clamp can be folded out completely. Therefore ROCUT XL can be used at any desired position of the pipe.





### ROCUT UKS 160/355

High-performance orbital circular saw Ø 160–355 mm

For cutting of plastic pipes made of PE, PP and PVC.  
For use on the building site or in the workshop

**Technical Data:**

**Voltage:** 230 V 50 / 60 Hz  
**Power:** 1750 W  
**Outer pipe diameters:** 160 mm–355 mm  
**Wall thickness pipe:** 8–40 mm



**Saw blade guard**

Safe operation

**Central clamping**

Optimum pipe centring

**Rubberised guide rollers**

Right-angled cuts with no misalignment

Secure clamping and optimum pipe centring are guaranteed by the central trapezoidal clamping device.

Four rubberised clamping & guide rollers ensure right-angled cuts with no misalignment.

Description	kg	No.
ROCUT UKS 160/355, complete with HM saw blade (No. 55505), without carrier box	12.9	100000532

#### Accessories

Description	kg	No.
Spare HM saw blade 180 x 30 mm	0.6	55505
Carrier box 700 x 350 x 500 mm	16.8	120000526

No. 55655



No. 55505



### EASYGRIP

Automatic strap wrench for plastic pipes Ø 20–160 mm (3/4–6")

The indispensable tool for socket welding large diameter plastic pipes

#### Accessories

Description	No.
Spare strap EASYGRIP	55076

Description	mm	Inch	No.
EASYGRIP	20–160	3/4–6"	55075



### UNIGRAT fast deburrer

Fast deburrer with HSS universal blade

For edge deburring on all conventional plastic pipes and plastic plates

Description	g	No.
UNIGRAT fast deburrer	30	21660



### GRATFIX HSS deburrer

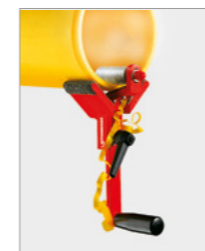
Deburrer

Ideal for deburring edges, pipes and steel, aluminium, brass, copper sheet, cast-iron and plastic plates

#### Accessories

Description	g	No.
Spare HSS blade	10	21652

Description	g	No.
GRATFIX HSS deburrer	50	21655



No. 55051

### Plastic pipe chamfering units

With replaceable blades Ø 16–160 mm (5/8–6")

For 15° outer chamfers on plastic pipe

#### Accessories

Description	g	No.
Spare blade size 1 and 2	30.0	55058

Description	Inch	mm	g	No.
Chamfering unit size 1	5/8–4.3/8	16–110	720	55050
Chamfering unit size 2	1.1/4–6	32–160	800	55051

## NOTES

## ROTHENBERGER Worldwide

<b>Australia</b>	ROTHENBERGER Australia Pty Ltd Unit 6 • 13 Hoyle Avenue Castle Hill • NSW 2154 • Australia Tel.: +61 2 98 99 75 77 sales-au@rothenberger.com rothenberger.com.au	<b>Netherlands</b>	ROTHENBERGER Nederland bv Postbus 45 • NL-5120 AA Rijen • Netherlands Tel.: +31 1 61 29 35 79 • Fax: +31 1 61 29 39 08 info@rothenberger.nl rothenberger.nl
<b>Austria</b>	ROTHENBERGER Werkzeuge und Maschinen Handelsgesellschaft mbH Gewerbeparkstraße 9 • A-5081 Anif • Austria Tel.: +43 6246 72 0 91 250 • Fax: +43 6246 72 0 91 215 verkauf@rothenberger.at rothenberger.at	<b>Poland</b>	ROTHENBERGER Polska Sp. z o.o. Ul. Annopol 4A • Hala C • PL-03-236 Warszawa • Poland Tel.: +48 22 213 59 00 • Fax: +48 22 213 59 01 biuro@rothenberger.pl rothenberger.pl
<b>Belgium</b>	ROTHENBERGER Benelux bvba Antwerpsesteenweg 59 • B-2630 Aartselaar • Belgium Tel.: +32 3 8 77 22 77 • Fax: +32 3 8 77 03 94 info@rothenberger.be rothenberger.be	<b>Romania</b>	ROTHENBERGER Romania Str. 1 Mai, Nr. 4 • 075100 Otopeni, Ilfov • Romania Tel.: +40 21 350 37 44 / 45 / 46 info@rothenberger.ro rothenberger-romania.ro
<b>Brazil</b>	ROTHENBERGER do Brasil LTDA Av. Fagundes de Oliveira 538 – Galpão A4 CEP 09950-300 • Diadema/SP • Brasil Tel.: +55 11 4044 4748 contato-br@rothenberger.com rothenberger.com.br	<b>Russia</b>	ROTHENBERGER Russia Avtozavodskaya str. 25 • 115280 Moscow • Russia Tel.: +7 800 700 57 96 • Tel.: +7 495 792 59 44 info@rothenberger-russia.ru rothenberger-russia.ru
<b>Bulgaria</b>	ROTHENBERGER Bulgaria EOOD Boul. Sitnjakovo 79 • BG-1111 Sofia • Bulgaria Tel.: +35 9 2 9 46 14 59 info@rothenberger.bg rothenberger.com/bg-bg	<b>Scandinavia</b>	ROTHENBERGER SCANDINAVIA A/S Smedevaenget 8 • DK-9560 Hadsund • Sweden P.O.Box 1366 • SE-17126 Solna • Sweden Tel.: +46 8 629 22 99 roscan@rothenberger.com rothenberger.com/se-se/contact/
<b>China</b>	ROTHENBERGER (Wuxi) Pipe Technologies Co., Ltd. Building D • No 9 Lianhe Road Hudai Industrial Park • 214161 Wuxi, Jiangsu • China Tel.: +886 0510 83217213 • Fax: +886 0510 83217263 office@rothenberger.cn	<b>South Africa</b>	ROTHENBERGER-TOOLS SA (Pty) Ltd P.O. Box 4360 • Edenvale 1610 165 Van Der Bijl Street • Meadowdale Germiston Gauteng (Johannesburg) • South Africa Tel.: +27 11 372 9631 • Fax: +27 11 372 9632 info@rothenberger.co.za rothenberger.co.za
<b>Czech Republic</b>	ROTHENBERGER CZ Prumyslova 1306/7 • 102 00 Praha 10 • Czech Republic Tel.: +420 271 730 183 prodej@rothenberger.cz rothenberger.cz	<b>Spain</b>	ROTHENBERGER S.A. Ctra. Durango-Elorrio, Km 2 • E-48220 Abadiano (Vizcaya) (P.O. Box) 117 • E-48200 Durango (Vizcaya) • Spain Tel.: +34 94 6 21 01 00 • Fax: +34 94 6 21 01 31 ventas@rothenberger.com rothenberger.es
<b>France</b>	ROTHENBERGER France S.A. 39 Quai de Marne • BP 45033 • F-51200 • Épernay • France Tel.: +33 3 87 74 92 92 • Fax: +33 3 87 74 94 03 info-fr@rothenberger.com rothenberger.fr	<b>Switzerland</b>	ROTHENBERGER (Schweiz) AG Herostr. 9 • CH-8048 Zürich • Switzerland Tel.: +41 44 435 30 30 • Fax: +41 44 401 06 08 info@rothenberger-werkzeuge.ch
<b>Germany</b>	ROTHENBERGER Deutschland GmbH Industriestraße 7 • 65779 Kelkheim • Germany Tel.: +49 6195 800 - 0 • Fax: +49 6195 800 - 3500 verkauf-deutschland@rothenberger.com rothenberger.com  ROTHENBERGER Werkzeuge Produktion GmbH Spessartstraße 2-4 • 65779 Kelkheim • Germany Tel.: +49 (0 6195 / 800 - 0 • Fax: +49 56 02 93 94 36	<b>Turkey</b>	ROTHENBERGER TÜRKİYE ROTHENBERGER Center, Barbaros Bulvarı No:9 TR-34775 Şerifali/Ümraniye İstanbul • Turkey Tel.: +90 216 449 24 85 • Fax: +90 216 449 24 87 rothenberger@rothenberger.com.tr rothenberger.com.tr
<b>Greece</b>	ROTHENBERGER Hellas S.A. Agias Kyriakis 45 • 17564 Paleo Faliro • Greece Tel.: +30 210 94 02 049 • +30 210 94 07 302-3 Fax: +30 210 94 07 322 ro-he@otenet.gr rothenberger.com	<b>UAE</b>	ROTHENBERGER Middle East FZCO PO Box 261190 • Jebel Ali Free Zone Dubai • United Arab Emirates Tel.: +971 4 883 97 77 • Fax: +971 4 883 97 57 office-ae@rothenberger.com  ROTHENBERGER Middle East Equipment Trading LLC PO Box 261190 • Al Quoz Industrial Area 3 Dubai • United Arab Emirates Tel.: +971 4 885 48 65 • Fax: +971 4 883 97 57 servicecenter-ae@rothenberger.com
<b>Hungary</b>	ROTHENBERGER Hungary Kft. Gubacsi út 24 • H-1097 Budapest • Hungary Tel.: +36 1 3 47 50 40 • Fax: +36 1 3 47 50 59 info@rothenberger.hu rothenberger.hu	<b>UK</b>	ROTHENBERGER UK Ltd. 2, Kingsthorpe Park • Henson Way Kettering • GB-Northants NN16 8PX • UK Tel.: +44 15 36 31 03 00 • Fax: +44 15 36 31 06 00 info@rothenberger.co.uk
<b>India</b>	ROTHENBERGER India Pvt. Ltd. Plot No 17 • Sector-37 • Pace city-I Gurgaon • Haryana-122 001 • India Tel.: +91 124 4618900 • Fax: +91 124 4019471 contactus@rothenbergerindia.com rothenberger.in	<b>Ukraine</b>	ROTHENBERGER-CENTER LTD. Kotovskogo Str. 11 • 04060 Kiev • Ukraine Tel.: +380 444941597 info@rothenberger.com.ua
<b>Italy</b>	ROTHENBERGER Italiana s.r.l. Via G. Reiss Romoli 17-19 • I-20019 Settimo Milanese • Italy Tel.: +39 02 33 50 601 • Fax: +39 02 33 50 0151 info@rothenberger.it rothenberger.it	<b>USA</b>	ROTHENBERGER USA Inc. 7130 Clinton Road • Loves Park • IL 61111 • USA Tel.: +1 80 05 45 76 98 • Fax: +1 81 56 33 08 79 customerservice-us@rothenberger.com rothenberger.com/us-en



# ROWELD

PLASTIC PIPE  
WELDING  
TECHNOLOGY



**ROTHENBERGER Plastic Technologies GmbH**

Spessartstraße 2-4  
D-65779 Kelkheim

Tel.: +49 (0)6195 / 800-8100  
Fax: +49 (0)6195 / 800-3739  
E-Mail: roweld@rothenberger.com

[www.rothenberger.com](http://www.rothenberger.com)